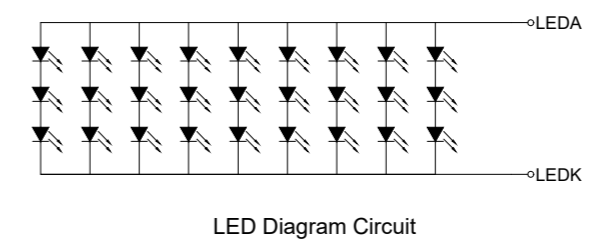
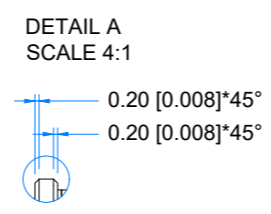
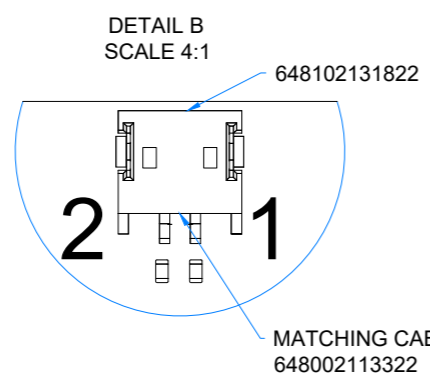
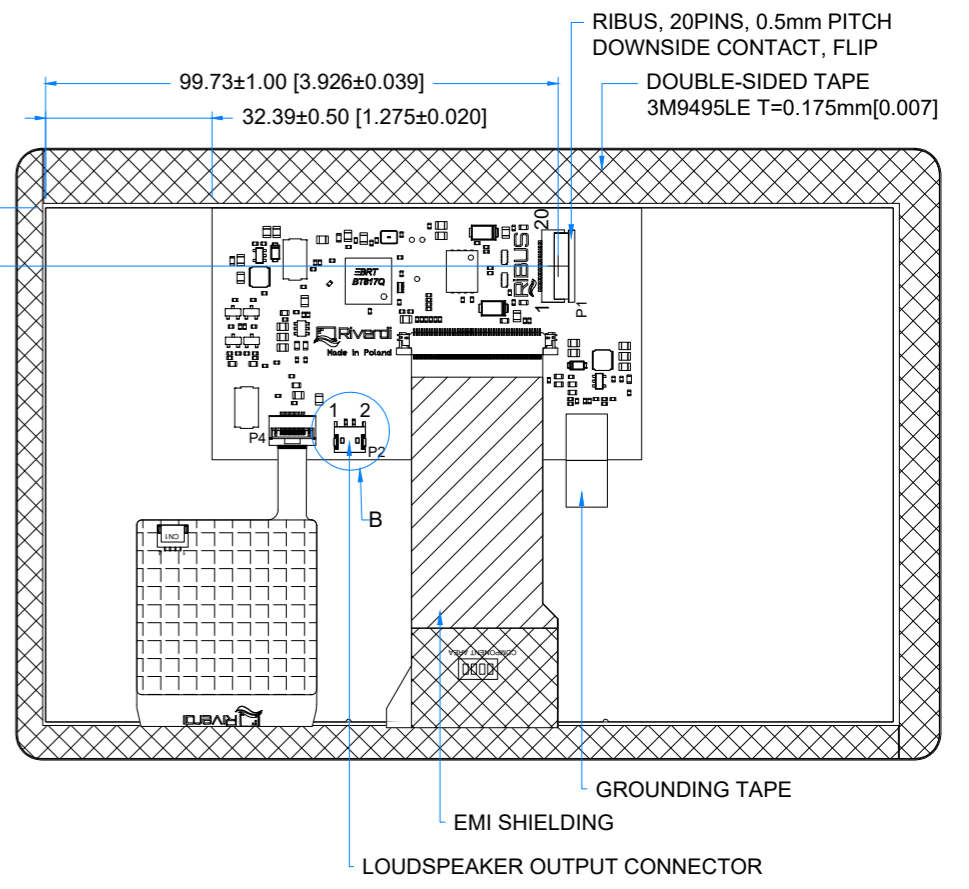
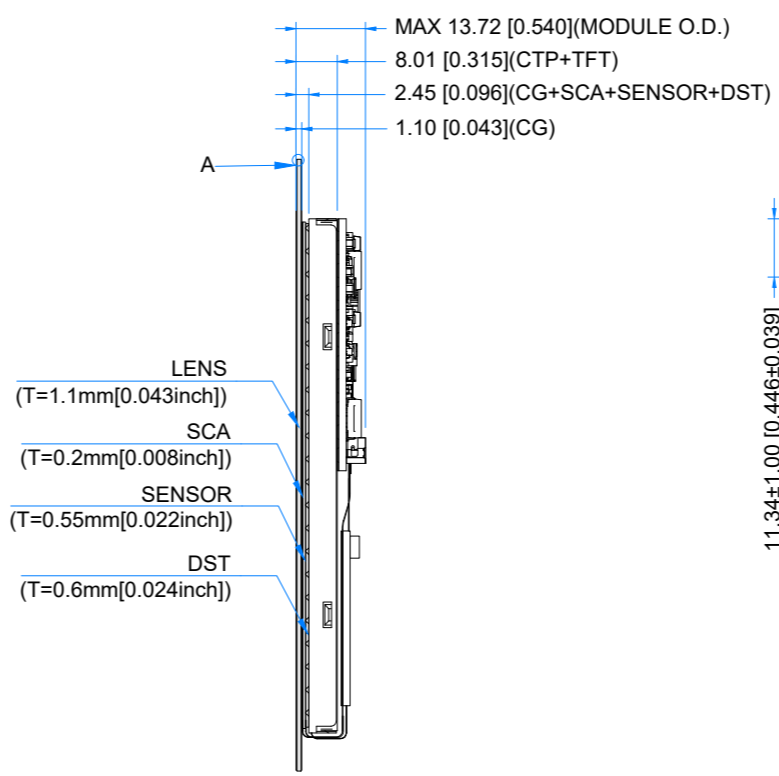
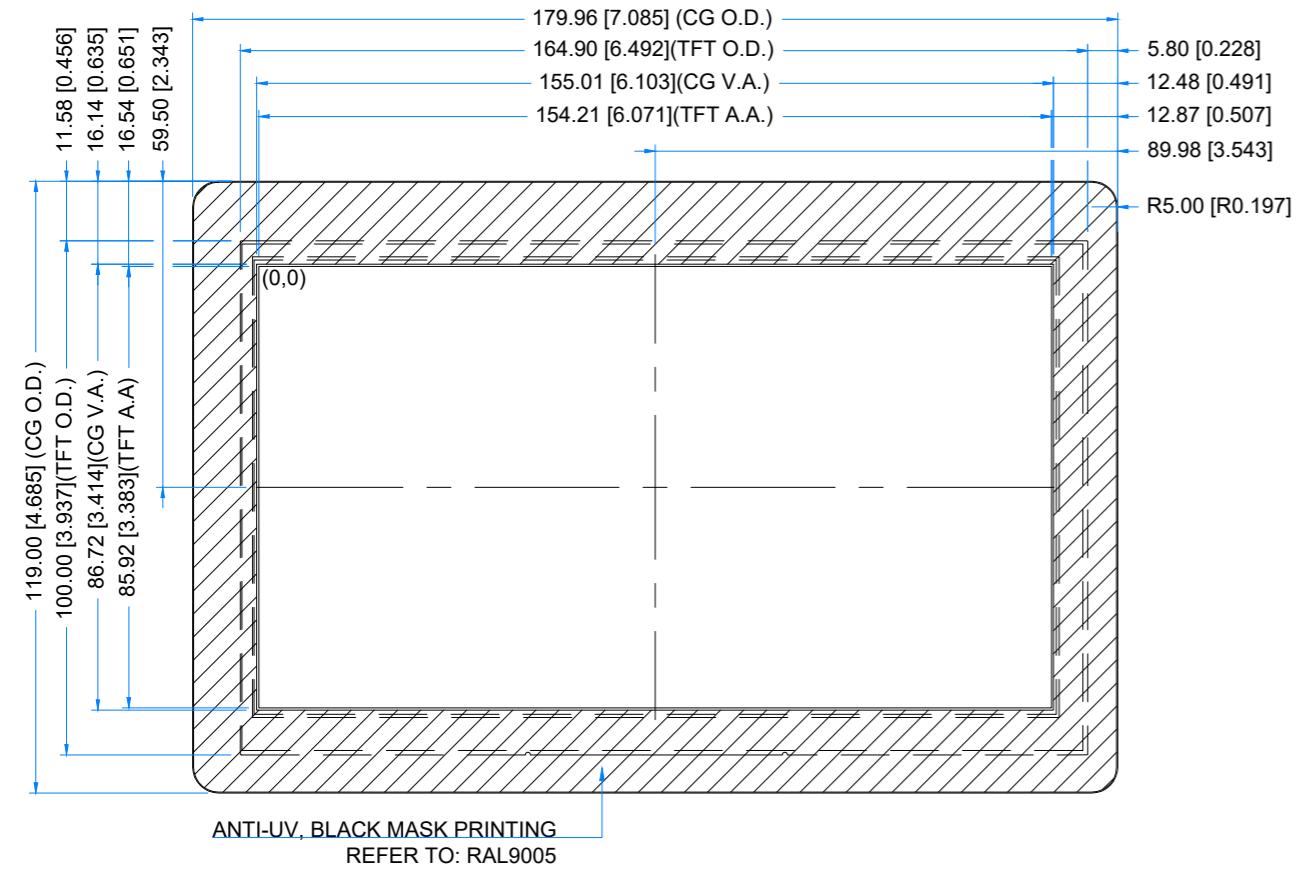


Revision:	Changes:	Date:
1.0	Initial Case	2026.03.22



PINOUT ON THE 2ND PAGE

**TFT NOTES:**  
 1. DISPLAY TYPE: TRANSMISSIVE, NORMALLY BLACK, IPS  
 2. RESOLUTION: 1024x600  
 3. VIEWING ANGLE: FREE  
 4. INTERFACE: SPI/QSPI  
 5. DRIVER IC ON BOARD: BT817Q  
 6. SUPPLY VOLTAGE FOR MODULE: 3.3V  
 7. SUPPLY VOLTAGE FOR BACKLIGHT: 5.0V(TYP.), BUILT-IN LED INVERTER

**GENERAL NOTES:**  
 1. TP STRUCTURE: G+G  
 2. CG THICKNESS: 1.10mm [0.043inch]  
 3. SURFACE HARDNESS: 7H  
 4. DRIVER IC: ILI2132A  
 5. INTERFACE: SPI/QSPI VIA RIBUS AND BT817Q

**GENERAL NOTES:**  
 1. OPERATING TEMPERATURE: -20°C ~ 70°C  
 2. STORAGE TEMPERATURE: -30°C ~ 80°C  
 3. WITHOUT INDIVIDUAL TOLERANCE: ±0.3mm  
 4. MODULE SURFACE LUMINANCE: 800cd/m<sup>2</sup>  
 5. RoHS COMPLIANT

PN: RVT70HSBNWC00 V1.1A			
SN:			
DRAWN: M.Stabinski	2026.03.22	1:1.47	
CHECKED: M.Wierzbowski	2026.03.22	[mm]	
APPR: M.Wierzbowski	2026.03.22	ISO A3	



P1-RIBUS CONNECTOR			
Pin No.	Desc.	Pin No.	Desc.
1	VDD	11	GPIO.1/IO.2
2	GND	12	GPIO.2/IO.3
3	SPI_SCLK	13	NC
4	MISO/IO.1	14	NC
5	MOSI/IO.0	15	NC
6	CS	16	NC
7	INT	17	BLVDD
8	RST/PD	18	BLVDD
9	GPIO.0	19	BLGND
10	DISP_AUDIO	20	BLGND

P2-LOUDSPEAKER OUTPUT CONNECTOR			
Pin No.	Desc.	Pin No.	Desc.
1	SPEAKER+	2	SPEAKER-